

## Review

### STATUS OF ORCHID TAXONOMY RESEARCH IN THE PHILIPPINES

Esperanza Maribel G. Agoo

Biology Department, De La Salle University-Manila

Orchidaceae is the largest of the monocotyledonous families in the Philippines. There are over 137 genera and about 998 species of orchids so far recorded for the archipelago. This represents about 10% of the total flora of the Philippines. The Philippines ranks second to New Guinea in occurrence of endemic species in the Malesian region. The monotypic endemic genera of orchids are *Ceratocentron*, *Megalotus*, *Phragmorchis*, and *Schuitemanina*. *Bogoria*, *Chelonistele*, *Lepidogyne*, *Omoea*, *Orchipedum* are Malesian endemics represented in the Philippines by one species each. The largest genera are *Bulbophyllum* (137 species), *Dendrochilum* (89 species), *Dendrobium* (85 species), *Eria* (54 species), *Liparis* (38 species), and *Malaxis* (33 species).

Orchid collecting started in the Philippines as early as the Spanish times by Spanish missionaries like I. Mercado, G. Kamel, J. Blanco, Llanos, Fernandez-Villar, and Naves. Other notable collectors or expeditions were P. Sonnerat, T. Haenke and L. Née (*Malaspina Expedition*), A. von Chamisso (*Romassoff*), S. Perrottet (*Le Rhone*), H. Cuming, A. Loher, F.J.F. Meyen (*Princess Louise of Prussia*), C. Gaudichaud-Beaupre (*La Bonite Expedition*), *Wilkes Expedition*, and the *Challenger*. This was also the time when horticultural companies brought plants to Europe for trade (Mendoza, 1959).

Collectors of the the Forestry Bureau in the 19<sup>th</sup> century, then the Bureau of Government Laboratories, and finally the Bureau of Science amassed a huge collection of specimens for the herbarium. The close collaboration of E. Merrill and O. Ames at Harvard University resulted to several new species for the Philippines. Duplicate specimens of all orchid collections were also sent to Dr. Ames. E. Quisumbing, D.R. Mendoza, M. Ramos, G. Edano, M.D. Sulit, P. Convocar, and M. Celestino were the prolific Filipino collectors for the herbarium of the Bureau of Science. Their foreign counterparts then were E.D. Merrill, A.D. Elmer, E.B. Copeland, H.M. Curran, C. Wenzel, M. Jacobs, C. Frake, H. Conklin, H. Taylor, B.B. Britton, R.B. Fox, M.L. Steiner, K.B. Day, J. & M.S. Clemens, among others.

In 1991-2000, the Flora of the Philippines Project, an initiative to extensively document the plants of the Philippines also contributed immensely to the orchid collections of the herbarium. This project was funded by the US National Science Foundation and USAID, through the Bishop Museum, Hawaii and later

the Botanical Research Institute of Texas. Duplicate specimens were distributed to the University of the Philippines at Los Banos, US National Herbarium, Harvard University Herbarium, Royal Botanic Gardens at Kew, National Herbarium of the Netherlands, Bogor Herbarium, and Singapore Botanic Gardens.

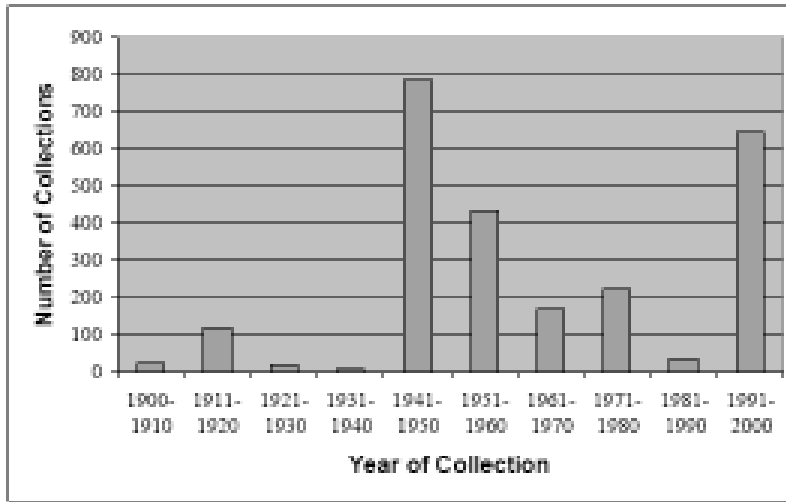


Figure 1. Collecting effort of the PNH through the decades

Inspite of these efforts, only about 50% of the genera and 20% of the species known for the Philippines are represented in the PNH (Figure 1).

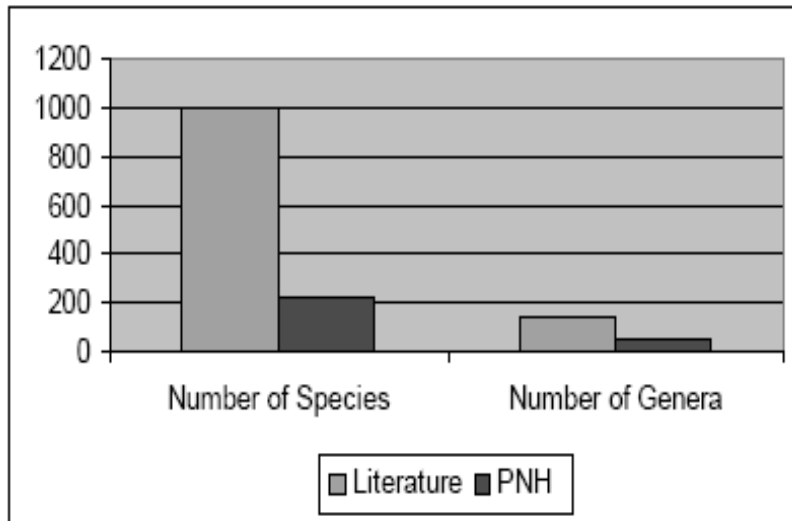
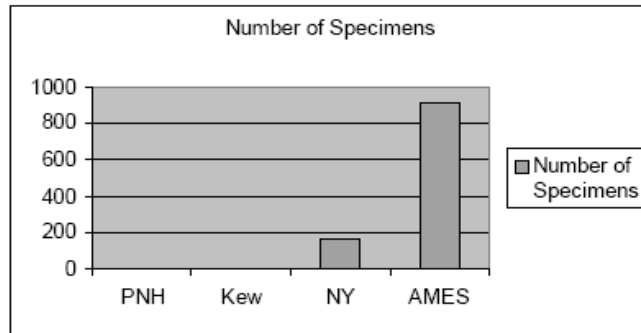


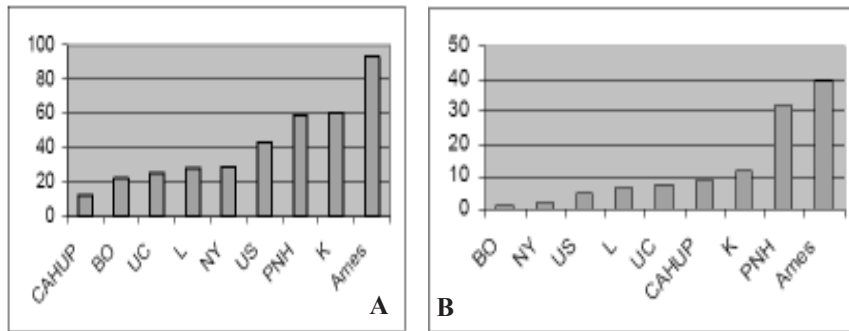
Figure 2. Comparison of species and genera of orchids known from literature and as represented at the PNH

This underscores the need to access the Philippine specimens in foreign herbaria for orchid studies. In the task to revise *Trichoglottis*, a fairly large genus, loans of specimens from AMES, NY, K, and US were invaluable. Most of the type specimens can be found in AMES where Merrill sent most of the specimens during his time (Figure 3).



**Figure 3. Distribution of type specimens of *Trichoglottis* in different herbaria**

Moreover, many of the specimens were noted to be deposited in AMES, K, PNH, US, NY, L, UC, BO, and CAHUP (Figure 4A). Each of these herbaria proved to be equally valuable as each have few to many specimens which may not have duplicates in other herbaria (Figure 4B).



**Figure 4A. Distribution of *Trichoglottis* specimens in different herbaria; B. Distribution of unicate *Trichoglottis* specimens in different herbaria**

#### Priority Sites and Genera for Collection

Collecting effort should be intensified to add more specimens to the PNH. These should be made particularly in islands where there are no or few representative specimens at the PNH. Priority sites should include Catanduanes, Siquijor, Burias, Northern and Southern Palawan Islands, among others. Other sites which should be recollected are Luzon, Mindanao, Mindoro, Palawan, Panay, Negros, and Samar.

Genera which are not represented in the PNH by any specimen should be given high priority. These include *Abdominea*, *Amesiella*, *Ania*, *Aphyllorchis*, *Apostasia*, *Arachnis*, *Ascocentrum*, *Ascoglossum*, *Bogoria*, *Brachypeza*, *Bromheadia*, *Cephalantheropsis*, *Ceratocentron*, *Corybas*, *Cymbidium*, *Cystorchis*, *Didymoplexis*, *Diplocaulobium*, *Disperis*, *Epigeneium*, *Erythrodes*, *Erythrorchis*, *Galeola*, *Gastrochilus*, *Geodorum*, *Glomera*, *Grosourdyia*, *Hippeophyllum*, *Hylophila*, *Hymenorchis*, *Kuhlhasseltia*, *Lecanorchis*, *Ludisia*, *Luisia*, *Macodes*, *Macropodanthus*, *Microsaccus*, *Myrmechis*, *Nephelaphyllum*, *Octarrhena*, *Oeceoclades*, *Omoea*, *Orchipedum*, *Pachystoma*, *Pennilabium*, *Phragmorchis*, *Pilophyllum*, *Platanthera*, *Plocoglottis*, *Poaephyllum*, *Pomatocalpa*, *Preptanthe*, *Pristiglottis*, *Pseudovanilla*, *Rhomboda*, *Sarcanthus*, *Schoenorchis*, *Stereochilus*, *Stereosandra*, *Thecostele*, *Thelymitra*, *Tropidia*, *Tuberolabium*, *Vandopsis*, *Vexillabium*, and *Zeuxine*.

#### **Priority Genera for Revision**

Recent revisions on Philippine orchids are *Dendrochilum* (Petersen, 1994) and *Trichoglottis* (Agoo, 2002), and *Pomatocalpa* (Watthana, 2005). *Dendrobium*, *Aerides*, *Liparis*, *Coelogyne*, and are being worked out. Other genera which need a modern revision are *Bulbophyllum*, *Phalaeonopsis*, *Malaxis*, *Eria*, *Appendicula*, *Phalaeonopsis*, *Oberonia*, *Phreatia*, and *Thrixspermum*, among others.

#### **Other Activities**

*Publication.* Checklists, popular articles, and scientific articles in print and CDROM materials are being pursued. Significant contributions were book publications by Valmayor (1984), Golamco (1991), Fessel and Balzer (1999), and Cootes (2001). These include descriptions, local distribution data, and full color photographs of species. A CD on Philippine orchid genera by Agoo et al. (2003) also presents interactive identification keys, description, and full color photographs of the genera of Philippine orchids. A checklist of Philippine orchid species and a literature module are also provided.

*Improvement of the PNH Orchid Library.* Copies of literature on Philippine orchids have been acquired and maintained at the PNH. There are a few other historical and modern literature which have to be obtained from other libraries in the US and Europe.

*Development of a Digitized Reference Collection on Philippine Orchids.* Photographs of type specimens found in AMES, US, KEW, and L are being acquired which will then be made available electronically.

*Training.* Potential source of manpower for orchid taxonomic research and support are students and orchid hobbyists. Given the proper training on specimen collection and processing techniques, orchid description, and basic taxonomic research, they can contribute significantly to the knowledge on Philippine orchids.

*Conservation of Orchids.* At present, eighteen (18) Philippine orchid species are included in the 2006 IUCN List of Threatened Species. These species were assessed by Agoo et al. (2004) and evaluated by the Philippine Plant Specialist

Group and Orchid Specialist Group. A resume of each of the species which include nomenclature, taxonomy, and ecology was prepared for the purpose.

**Literature Cited:**

- Agoo, E.M.G., Schuiteman A., de Vogel E.F. 2003. Orchids of the Philippines Volume I: Illustrated Checklist and Genera (CD ROM). ETI and NHN, the Netherlands.
- Agoo, E.M.G. 2002. Systematic Studies of Philippine *Trichoglottis* Blume (Orchidaceae). Ph.D. Dissertation. De La Salle University, Manila.
- Agoo, E.M.G., Cootes, J., Golamco, A. Jr., de Vogel, E.F. and Tiu, D. 2004. *Aerides lawrenciae*, *Aerides leeanum*, *Amesiella philippensis*, *Ascoglossum calopterygum*, *Ceratocentron fesselii*, *Dendrobium sanderiae*, *Epigeneium treacherianum*, *Gastrochilus calceolaris*, *Paphiopedilum adductum*, *Paphiopedilum ciliolare*, *Paphiopedilum fowliei*, *Paphiopedilum urbanianum*, *Phalaenopsis lindenii*, *Phalaenopsis micholitzii*, *Vanda javierae*, *Vanda scandens*. In: IUCN 2004. 2004 IUCN Red List of Threatened Species. www.redlist.org.
- Cootes, J. 2001. The Orchids of the Philippines. Times Editions, Singapore.
- Fessel, H.J. and Balzer, P. 1999. A Selection of Philippine Native Orchids. VisCA-GTZ applied Tropical Ecology Program, Visayas College of Agriculture, Baybay, Leyte, and Times Editions, Singapore.
- Golamco, A. 1991. Philippines' Book on Orchids. Jemma Inc., Cainta, Rizal.
- Golamco, A. Jr. 2002. *Paphiopedilum haynaldianum* var. *laurae* Golamco var. *nov.* A new variety from Cebu, Visayas Island, Philippines. Waling-Waling Review 10(1):36-39.
- Kurzwell, H. 2005. Taxonomic studies in the genus *Disperis* (Orchidaceae) in Southeast Asia. Blumea 50 (1):143-152.
- Lubag-Arquiza, A.M. 2006. *Spathoglottis palawanensis* and *Spathoglottis philippinensis*. Two new orchid species from the Philippines. Orchid Digest. 70(3):170-173.
- Lubag-Arquiza, A.M. and Christenson, E. 2006. Validation of *Dendrobium sibuyanense*. Orchid Digest 70(3):174.
- Mendoza, D.R. 1959. Philippine orchid collectors. Philippine Orchid Review: 17-36.
- Rice, R. and Wood, J. 2003. Two new species of *Renanthera* from Borneo and the Philippines and nomenclatural changes in *Renantherella*. Orchid Review 111 :344-355.
- Valmayor, H.L. 1984. Orchidiana Philippiniana I-II. Eugenio Lopez Foundation, Manila.
- Wathana, S. 2005. Systematics and Ecology of the genus *Pomatocalpa* Breda (Orchidaceae). Botanical Garden and Museum of Natural History of Denmark. University of Copenhagen. (Ph.D. Dissertation).

**LIST OF ORCHIDS IN THE PHILIPPINES**

(Updated from Agoo et al. 2003)

- Abdominea**  
*Abdominea minimiflora* (Hook.f.)  
 J.J.Sm.
- Acanthephippium**  
*Acanthephippium mantinianum*  
 L.Linden & Cogn.  
*Acanthephippium sylhetense* Lindl.
- Acriopsis**  
*Acriopsis indica* Wight  
*Acriopsis liliifolia* (J.Koenig)  
 Ormerod
- Aerides**  
*Aerides augustianum* Rolfe  
*Aerides burbidgei* Rchb.f. ex Burb.  
*Aerides cylindricum* Boxall ex  
 Náves in Blanco  
*Aerides larpenta* Boxall ex Náves  
 in the Blanco  
*Aerides lawrenciae* Rchb.f.  
*Aerides lawrenciae* Rchb.f. var.  
*fortichii* Ames & Quisumb.  
*Aerides lawrenciae* Rchb.f. var.  
*punctata* Ames & Quisumb.  
*Aerides leeanum* Rchb.f.  
*Aerides margaritaceum* Boxall ex  
 Náves in Blanco  
*Aerides mendellii* Boxall ex Náves  
*Aerides odoratum* Lour.  
*Aerides quinquevulnera* Lindl.  
*Aerides savageanum* Sander ex  
 Veitch  
*Aerides shibatianum* Boxall ex  
 Náves
- Aglossorhycha**  
*Aglossorhyncha* sp.
- Agrostophyllum**  
*Agrostophyllum elmeri* Ames  
*Agrostophyllum elongatum* (Ridl.)  
 Schuit.  
*Agrostophyllum glumaceum*  
 Hook.f.  
*Agrostophyllum inocephalum*  
 (Schauer) Ames
- Agrostophyllum leytense* Ames  
*Agrostophyllum longivaginatum*  
 Ames  
*Agrostophyllum luzonense* Ames &  
 Quisumb.  
*Agrostophyllum malindangense*  
*Agrostophyllum mearnsii* Ames  
*Agrostophyllum merrillii* Ames  
*Agrostophyllum mindanaense* Ames  
*Agrostophyllum philippinense*  
 Ames  
*Agrostophyllum saccatilabium*  
 Ames & Quisumb.  
*Agrostophyllum stipulatum* (Griff.)  
 Schltr.
- Amesiella**  
*Amesiella minor* Senghas  
*Amesiella monticola* Cootes &  
 D.P.Banks  
*Amesiella philippinensis* (Ames)  
 Garay
- Anoetochilus**  
*Anoetochilus argyroneurum*  
 Boxall ex Náves  
*Anoetochilus bullenii* Boxall ex  
 Náves  
*Anoetochilus dayi* Boxall ex  
 Náves  
*Anoetochilus intermedium* Boxall  
 ex Náves  
*Anoetochilus* sp.
- Aphyllorchis**  
*Aphyllorchis halconensis* Ames  
*Aphyllorchis montana* Rchb.f.  
*Aphyllorchis pallida* Blume
- Apostasia**  
*Apostasia nuda* R.Br.  
*Apostasia wallichii* R.Br.
- Appendicula**  
*Appendicula alba* Blume  
*Appendicula anceps* Blume  
*Appendicula buxifolia* Blume

*Appendicula clemensiae* (Ames)  
Ames  
*Appendicula cornuta* Blume  
*Appendicula crotalina* (Ames)  
Schltr.  
*Appendicula cuneata* Ames  
*Appendicula elmeri* (Ames) Ames  
*Appendicula fenixii* (Ames) Schltr.  
*Appendicula irigensis* Ames  
*Appendicula leytensis* Ames  
*Appendicula lucbanensis* (Ames)  
Ames  
*Appendicula luzonensis* (Ames)  
Ames  
*Appendicula malindangensis*  
(Ames) Schltr.  
*Appendicula maquilangensis* Ames  
*Appendicula merrillii* Ames  
*Appendicula micrantha* Lindl.  
*Appendicula negrosiana* (Ames)  
Ames  
*Appendicula pendula* Blume  
*Appendicula perplexa* (Ames)  
Ames  
*Appendicula polyantha* Ames  
*Appendicula reflexa* Blume  
*Appendicula tagalensium* Kraenzl  
*Appendicula undulata* Blume var.  
*longicalcarata* (Rolfe) Ames  
*Appendicula weberi* Ames  
*Appendicula xytriophora* Rchb.f. in  
Seem.

**Arachnis**

*Arachnis flosaeris* (L.) Rchb.f.  
*Arachnis longicaulis* (Schltr.)  
L.O. Williams

**Ascocentrum**

*Ascocentrum aurantiacum* (Schltr.)  
Schltr. subsp. *philippinense*  
Christenson  
*Ascocentrum miniatum* (Lindl.)  
Schltr.

**Ascochilus**

*Ascochilus calceolaris* (Teijsm. &  
Binn.) Garay

*Ascochilus emarginatus* (Blume)  
Schuit.

*Ascochilus leytensis* (Ames) Garay

**Ascoglossum**

*Ascoglossum calopterum* (Rchb.f.)  
Schltr.

**Bogoria**

*Bogoria merrillii* (Ames) Garay

**Brachypeza**

*Brachypeza zamboangensis* (Ames)  
Garay

**Bromheadia**

*Bromheadia alticola* Ridl.  
*Bromheadia devogelii* Kruiz.  
*Bromheadia finlaysoniana* (Lindl.)  
Miq.

**Bulbophyllum**

*Bulbophyllum absconditum* J.J.Sm.  
*Bulbophyllum aeolium* Ames  
*Bulbophyllum aestivale* Ames  
*Bulbophyllum alagense* Ames  
*Bulbophyllum alboroseum* Ames  
*Bulbophyllum alsiosum* Ames  
*Bulbophyllum antenniferum*  
(Lindl.) Rchb.f.  
*Bulbophyllum apodum* Hook.f.  
*Bulbophyllum apoense* Schuit. & de  
Vogel  
*Bulbophyllum arrectum* Kraenzl  
*Bulbophyllum auratum* (Lindl.)  
Rchb.f.  
*Bulbophyllum aurecemum* Boxall  
ex Náves  
*Bulbophyllum balaeniceps* Rchb.f.  
*Bulbophyllum basisetum* J.J.Sm.  
*Bulbophyllum bataanense* Ames  
*Bulbophyllum baucoense* Ames  
*Bulbophyllum biflorum* Teijsm. &  
Binn.  
*Bulbophyllum bolsteri* Ames  
*Bulbophyllum bontocense* Ames  
*Bulbophyllum braccatum* Rchb.f.  
*Bulbophyllum brevibrachiatum*  
(Schltr.) J.J.Sm.

- Bulbophyllum calophyllum*  
L.O.Williams
- Bulbophyllum canlaonense* Ames
- Bulbophyllum carunculatum* Garay,  
Hamer & Siegerist
- Bulbophyllum catenulatum* Kraenzl
- Bulbophyllum cephalophorum*  
Garay, Hamer & Siegerist
- Bulbophyllum cheiri* Lindl.
- Bulbophyllum chrysendetum* Ames
- Bulbophyllum chryseum* (Kraenzl)  
Ames
- Bulbophyllum clandestinum* Lindl.
- Bulbophyllum cleistogamum* Ridl.
- Bulbophyllum clemensiae* Ames
- Bulbophyllum colubrimodum* Ames
- Bulbophyllum coniferum* Ridl.
- Bulbophyllum cootesii* M.A.Clem.
- Bulbophyllum cornutum* (Blume)  
Rchb.f.
- Bulbophyllum costatum* Ames
- Bulbophyllum cryptophoranthus*  
Garay
- Bulbophyllum cubicum* Ames
- Bulbophyllum cumingii* (Lindl.)  
Rchb.f.
- Bulbophyllum cuneatum* Rolfe ex  
Ames
- Bulbophyllum cupreum* Lindl.
- Bulbophyllum curranii* Ames
- Bulbophyllum dagamense* Ames
- Bulbophyllum dasypetalum* Rolfe  
ex Ames
- Bulbophyllum dearei* (Hort.)  
Rchb.f.
- Bulbophyllum debrincatae*  
J.J.Verm.
- Bulbophyllum deceptum* Ames
- Bulbophyllum dentiferum* Ridl.
- Bulbophyllum dissolutum* Ames
- Bulbophyllum dolichoblepharon*  
(Schltr.) J.J.Sm.
- Bulbophyllum doryphoroides* Ames
- Bulbophyllum ebracteolatum*  
Kraenzl
- Bulbophyllum echinochilum*  
Kraenzl
- Bulbophyllum elassoglossum*  
Siegerist
- Bulbophyllum elmeri* Ames
- Bulbophyllum elongatum* (Blume)  
Hassk.
- Bulbophyllum emiliorum* Ames &  
Quisumb.
- Bulbophyllum erosipetalum*  
C.Schweinf.
- Bulbophyllum erratum* Ames
- Bulbophyllum escritorii* Ames
- Bulbophyllum exile* Ames
- Bulbophyllum exquisitum* Ames
- Bulbophyllum facetum* Garay,  
Hamer & Siegerist
- Bulbophyllum fenixii* Ames
- Bulbophyllum filicoides* Ames
- Bulbophyllum flavescens* (Blume)  
Lindl.
- Bulbophyllum flavofimbriatum*  
J.J.Sm.
- Bulbophyllum gimagaanense* Ames
- Bulbophyllum glandulosum* Ames
- Bulbophyllum gnomoniferum* Ames
- Bulbophyllum goebelianum* Kraenzl
- Bulbophyllum gusdorfii* J.J.Sm.
- Bulbophyllum halconense* Ames
- Bulbophyllum invisum* Ames
- Bulbophyllum kittredgei* (Garay,  
Hamer & Siegerist) J.J.Verm.
- Bulbophyllum lancifolium* Ames
- Bulbophyllum lancilabium* Ames
- Bulbophyllum lancipetalum* Ames
- Bulbophyllum lasioglossum* Rolfe  
ex Ames
- Bulbophyllum lasiopetalum* Kraenzl
- Bulbophyllum laxiflorum* (Blume)  
Lindl.
- Bulbophyllum leibergii* Ames &  
Rolfe



- Bulbophyllum leparentense* Ames  
*Bulbophyllum lepidum* (Blume)  
J.J.Sm.  
*Bulbophyllum leptocaulon* Kraenzl  
*Bulbophyllum levanae* Ames  
*Bulbophyllum levanae* Ames var.  
*giganteum* Quisumb. &  
C.Schweinf.  
*Bulbophyllum leytense* Ames  
*Bulbophyllum lipense* Ames  
*Bulbophyllum lobbii* Lindl.  
*Bulbophyllum loherianum*  
(Kraenzl) Ames  
*Bulbophyllum longiflorum* Thouars  
*Bulbophyllum longipetiolatum*  
Ames  
*Bulbophyllum macranthum* Lindl.  
*Bulbophyllum maculatum* Boxall ex  
Náves  
*Bulbophyllum maculosum* Ames  
*Bulbophyllum makoyanum*  
(Rchb.f.) Ridl.  
*Bulbophyllum maquilingense* Ames  
& Quisumb.  
*Bulbophyllum marivelense* Ames  
*Bulbophyllum masaganapense*  
Ames  
*Bulbophyllum maxillare* (Lindl.)  
Rchb.f.  
*Bulbophyllum mearnsii* Ames  
*Bulbophyllum melanoglossum*  
Kraenzl  
*Bulbophyllum membranifolium*  
Hook.f.  
*Bulbophyllum merrittii* Ames  
*Bulbophyllum mindorense* Ames  
*Bulbophyllum monstrabile* Ames  
*Bulbophyllum mutabile* (Blume)  
Lindl.  
*Bulbophyllum nasseri* Garay  
*Bulbophyllum negrosianum* Ames  
*Bulbophyllum nemorale*  
L.O.Williams  
*Bulbophyllum nymphopolitanum*  
Kraenzl  
*Bulbophyllum odoratum* (Blume)  
Lindl.  
*Bulbophyllum orthoglossum*  
Kraenzl  
*Bulbophyllum othonis* (Kuntze)  
J.J.Sm.  
*Bulbophyllum pampangense* Ames  
*Bulbophyllum papillipetalum* Ames  
*Bulbophyllum papulosum* Garay  
*Bulbophyllum pardalotum* Garay,  
Hamer & Siegerist  
*Bulbophyllum pauciflorum* Ames  
*Bulbophyllum penduliscapum*  
J.J.Sm.  
*Bulbophyllum peramoenum* Ames  
*Bulbophyllum piestoglossum*  
J.J.Verm.  
*Bulbophyllum pleurothalloides*  
Ames  
*Bulbophyllum plumatum* Ames  
*Bulbophyllum puguahaanense*  
Ames  
*Bulbophyllum putidum* (Teijsm. &  
Binn.) J.J.Sm.  
*Bulbophyllum recurvilabre* Garay  
*Bulbophyllum reilloi* Ames  
*Bulbophyllum reticulatum* Boxall  
ex Náves  
*Bulbophyllum rhizomatosum* Ames  
& C.Schweinf.  
*Bulbophyllum santosii* Ames  
*Bulbophyllum sapphirinum* Ames  
*Bulbophyllum saurocephalum*  
Rchb.f.  
*Bulbophyllum savaiense* Schltr.  
subsp. *subcubicum* (J.J.Sm.)  
J.J.Verm.  
*Bulbophyllum schefferi* (Kuntze)  
Schltr.  
*Bulbophyllum sempiternum* Ames  
*Bulbophyllum sensile* Ames

*Bulbophyllum sibuyanense* Ames  
*Bulbophyllum stellatum* Ames  
*Bulbophyllum subaequale* Ames  
*Bulbophyllum superfluum* Kraenzl  
*Bulbophyllum surigaense* Ames & Quisumb.  
*Bulbophyllum tenuifolium* (Blume) Lindl.  
*Bulbophyllum toppingii* Ames  
*Bulbophyllum tortuosum* (Blume) Lindl.  
*Bulbophyllum trigonosepalum* Kraenzl  
*Bulbophyllum trisetum* Ames  
*Bulbophyllum unguiculatum* Rchb.f.  
*Bulbophyllum uniflorum* (Blume) Hassk.  
*Bulbophyllum vagans* Ames & Rolfe  
*Bulbophyllum vaginatum* (Lindl.) Rchb.f.  
*Bulbophyllum vermiculare* Hook.f.  
*Bulbophyllum weberi* Ames  
*Bulbophyllum whitfordii* Rolfe ex Ames  
*Bulbophyllum williamsii* A.D.Hawkes  
*Bulbophyllum woelfliae* Garay, Senghas & Lemcke  
*Bulbophyllum zambalense* Ames  
*Bulbophyllum zamboangense* Ames

**Cadetia**

*Cadetia microphyton* (L.O.Williams) Christenson

**Calanthe**

*Calanthe angustifolia* (Blume) Lindl.  
*Calanthe conspicua* Lindl.  
*Calanthe davaensis* Ames  
*Calanthe elmeri* Ames  
*Calanthe halconensis* Ames  
*Calanthe hennisii* Loher  
*Calanthe jusnerii* Boxall ex Náves

*Calanthe lacerata* Ames  
*Calanthe lyroglossa* Rchb.f.  
*Calanthe maquilangensis* Ames  
*Calanthe masuca* Boxall ex Náves  
*Calanthe mcgregorii* Ames  
*Calanthe mindorensis* Ames  
*Calanthe nivalis* Boxall ex Náves  
*Calanthe pulchra* (Blume) Lindl.  
*Calanthe rubens* Ridl.  
*Calanthe triplicata* (Willemet) Ames  
*Calanthe vestita* Lindl.

**Camarotis**

*Camarotis purpurea* Boxall ex Náves

**Cephalantheropsis**

*Cephalantheropsis gracilis* (Lindl.) S.Y.Hu  
*Cephalantheropsis halconensis* (Ames) S.S.Ying  
*Cephalantheropsis longipes* (Hook.f.) Ormerod  
*Cephalantheropsis obcordata* (Lindl.) Ormerod

**Ceratocentron**

*Ceratocentron fessellii* Senghas

**Ceratostylis**

*Ceratostylis caespitosa* L.O.Williams  
*Ceratostylis dataensis* Ames  
*Ceratostylis elmeri* Ames  
*Ceratostylis incognita* J.T.Atwood & Beckner  
*Ceratostylis loheri* L.O.Williams  
*Ceratostylis mindanaensis* Ames  
*Ceratostylis philippinensis* Rolfe ex Ames  
*Ceratostylis ramosa* Ames & Rolfe  
*Ceratostylis retisquama* Rchb.f.  
*Ceratostylis senilis* Rchb.f.  
*Ceratostylis subulata* Blume  
*Ceratostylis wenzelii* Ames

**Chamaeanthus**

*Chamaeanthus brachystachys* Schltr.

**Cheirostylis**

- Cheirostylis chinensis* Rolfe
- Cheirostylis merrillii* (Ames & Quisumb.) Ormerod
- Cheirostylis octodactyla* Ames

**Chelonistele**

- Chelonistele sulphurea* (Blume) Pfitzer

**Chrysoglossum**

- Chrysoglossum ornatum* Blume

**Cleisostoma**

- Cleisostoma chrysochilum* Kraenzl
- Cleisostoma duplicilobum* (J.J.Sm.) Garay
- Cleisostoma sagittatum* Blume
- Cleisostoma striolatum* (Rchb.f.) Garay
- Cleisostoma subulatum* Blume
- Cleisostoma uraiense* (Hayata) Garay & H.R.Sweet
- Cleisostoma weberi* (Ames) Garay

**Coelogyne**

- Coelogyne asperata* Lindl.
- Coelogyne bilamellata* Lindl.
- Coelogyne candoonensis* Ames
- Coelogyne chloroptera* Rchb.f.
- Coelogyne ciliata* Boxall ex Náves
- Coelogyne confusa* Ames
- Coelogyne elmeri* Ames
- Coelogyne integerrima* Ames
- Coelogyne loheri* Rolfe
- Coelogyne longirachis* Ames
- Coelogyne marmorata* Rchb.f.
- Coelogyne merrillii* Ames
- Coelogyne minutissima* Kraenzl
- Coelogyne palawanensis* Ames
- Coelogyne pandurata* Lindl.
- Coelogyne quinquelamellata* Ames
- Coelogyne remediosiae* Ames & Quisumb.
- Coelogyne rochussenii* de Vriese
- Coelogyne sparsa* Rchb.f.
- Coelogyne swaniana* Rolfe
- Coelogyne usitana* Roeth & O.Gruss

- Coelogyne vanoverberghii* Ames
- Coelogyne viscosa* Boxall ex Náves

**Collabium**

- Collabium formosanum* Hayata

**Cordiglottis**

- Cordiglottis filiformis* (Hook.f.) Garay

**Corybas**

- Corybas laceratus* L.O.Williams
- Corybas merrillii* (Ames) Ames
- Corybas ramosianus* J.Dransf.

**Corymborkis**

- Corymborkis veratrifolia* (Reinw.) Blume

**Cryptostylis**

- Cryptostylis acutata* J.J.Sm.
- Cryptostylis arachnites* (Blume) Hassk.
- Cryptostylis taiwaniana* Masam.

**Cymbidium**

- Cymbidium aliciae* Quisumb.
- Cymbidium atropurpureum* (Lindl.) Rolfe
- Cymbidium bicolor* Lindl. subsp. *pubescens* (Lindl.) Du Puy & P.J.Cribb
- Cymbidium cyperifolium* Wall. ex Lindl. subsp. *indochinense* Du Puy & P.J.Cribb
- Cymbidium dayanum* Rchb.f.
- Cymbidium ensifolium* (L.) Sw.
- Cymbidium finlaysonianum* Lindl.
- Cymbidium huttonii* Boxall ex Náves

**Cyrtosia**

- Cyrtosia* sp.

**Cystorchis**

- Cystorchis aphylla* Ridl.
- Cystorchis javanica* (Blume) Blume
- Cystorchis luzonensis* Ames

**Dendrobium**

- Dendrobium acclinia* Rchb.f.
- Dendrobium acuminatissimum* (Blume) Lindl.

- Dendrobium agusanense* Ames  
*Dendrobium albayense* Ames  
*Dendrobium album* Boxall ex  
Náves  
*Dendrobium aliciae* Ames &  
Quisumb.  
*Dendrobium aloifolium* (Blume)  
Rchb.f.  
*Dendrobium amethystoglossum*  
Rchb.f.  
*Dendrobium anosmum* Lindl.  
*Dendrobium aphyllum* (Roxb.)  
C.E.C.Fisch.  
*Dendrobium auriculatum* Ames &  
Quisumb.  
*Dendrobium balzerianum* Fessel &  
Lückel  
*Dendrobium basilanense* Ames  
*Dendrobium bicaudatum* Reinw. ex  
Lindl.  
*Dendrobium blanche-amesii*  
A.D.Hawkes & A.H.Heller  
*Dendrobium blumei* Lindl.  
*Dendrobium bukidnonense* Ames &  
Quisumb.  
*Dendrobium bullenianum* Rchb.f.  
*Dendrobium bunuanense* Ames  
*Dendrobium cabadbareense* Ames  
*Dendrobium carinatum* (L.) Willd.  
*Dendrobium ceraula* Rchb.f.  
*Dendrobium cerinum* Rchb.f.  
*Dendrobium chameleon* Ames  
*Dendrobium compactum* Rolfe  
*Dendrobium conanthum* Schltr.  
*Dendrobium crassimarginatum*  
L.O.Williams  
*Dendrobium crumenatum* Sw.  
*Dendrobium cultratum* Schltr.  
*Dendrobium dayanum* Boxall ex  
Náves  
*Dendrobium dearei* Rchb.f.  
*Dendrobium diffusum*  
L.O.Williams  
*Dendrobium distichum* (Presl)  
Rchb.f.  
*Dendrobium elmeri* Ames  
*Dendrobium equitans* Kraenzl  
*Dendrobium escritorii* Ames  
*Dendrobium fairchildiae* Ames &  
Quisumb.  
*Dendrobium gerlandianum* Kraenzl  
*Dendrobium goldschmidtianum*  
Kraenzl  
*Dendrobium guerreroi* Ames &  
Quisumb.  
*Dendrobium hercoglossum* Rchb.f.  
*Dendrobium heterocarpum* Wall. ex  
Lindl.  
*Dendrobium hymenanthum* Rchb.f.  
*Dendrobium indivisum* (Blume)  
Miq.  
*Dendrobium ionopus* Rchb.f.  
*Dendrobium junceum* Lindl.  
*Dendrobium leytense* Ames  
*Dendrobium linguella* Rchb.f.  
*Dendrobium lunatum* Lindl.  
*Dendrobium luzonense* Lindl.  
*Dendrobium macrophyllum* A.Rich  
*Dendrobium marivelense* Ames  
*Dendrobium merrillii* Ames  
*Dendrobium milaniae* Fessel &  
Lückel  
*Dendrobium mindanaense* Ames  
*Dendrobium miyasakii* Ames &  
Quisumb.  
*Dendrobium modestum* Rchb.f.  
*Dendrobium philippinense* Ames  
*Dendrobium phillipsii* Ames &  
Quisumb.  
*Dendrobium planibulbe* Lindl.  
*Dendrobium platycaulon* Rolfe  
*Dendrobium polytrichum* Ames  
*Dendrobium pristinum* Ames  
*Dendrobium profusum* Rchb.f.  
*Dendrobium pseudoequitans* Fessel  
& Lückel  
*Dendrobium quisumbingii*  
A.D.Hawkes & A.H.Heller  
*Dendrobium ramosii* Ames

- Dendrobium salaccense* (Blume)  
Lindl.
- Dendrobium sanderae* Rolfe
- Dendrobium sanderae* Rolfe var.  
*parviflorum* Anschuetz ex  
Quisumb.
- Dendrobium sanderae* Rolfe var.  
*surigaense* Quisumb.
- Dendrobium sanguinolentum* Lindl.
- Dendrobium schuetzei* Rolfe
- Dendrobium secundum* (Blume)  
Lindl.
- Dendrobium sibuyanense* Lubag-  
Arquiza Lubag-Arquiza, Naranja,  
Baldos, & Sacdalan
- Dendrochilum**
- Dendrochilum abortum* (Ames)  
L.O.Williams
- Dendrochilum affine* Ames
- Dendrochilum amesianum*  
H.A.Pedersen
- Dendrochilum anfractum* (Ames)  
Pfitzer
- Dendrochilum anfractum* (Ames)  
Pfitzer var. *anfractoides* (Ames)  
L.O.Williams
- Dendrochilum apiculatum* (Ames)  
L.O.Williams
- Dendrochilum apoense* T.Hashim.
- Dendrochilum arachnites* Rchb.f.
- Dendrochilum asperum*  
L.O.Williams
- Dendrochilum auriculare* Ames
- Dendrochilum binuangense* Ames
- Dendrochilum cinnabarinum*  
Pfitzer in Engl.
- Dendrochilum cinnabarinum*  
Pfitzer var. *sanguineum* (Ames)  
H.A.Pedersen
- Dendrochilum cobbianum* Rchb.f.
- Dendrochilum convallariaeforme*  
Schauer
- Dendrochilum convallariaeforme*  
Schauer var. *minor* (Ames)  
H.A.Pedersen
- Dendrochilum cootesii*  
H.A.Pedersen
- Dendrochilum copelandii* (Ames)  
Ames
- Dendrochilum cordatum*  
H.A.Pedersen
- Dendrochilum curranii* Ames
- Dendrochilum curranii* Ames var.  
*serratoi* (Ames) L.O.Williams
- Dendrochilum cymbiforme* Ames
- Dendrochilum ecallosum* Ames
- Dendrochilum edanoi* Quisumb.
- Dendrochilum elmeri* Ames
- Dendrochilum exiguum* (Ames)  
H.A.Pedersen
- Dendrochilum exile* Ames
- Dendrochilum eximium* (Ames)  
L.O.Williams
- Dendrochilum filiforme* Lindl.
- Dendrochilum flexuosum*  
H.A.Pedersen
- Dendrochilum foxworthyi* Ames
- Dendrochilum glumaceum* Lindl.
- Dendrochilum graciliscapum*  
(Ames) Pfitzer
- Dendrochilum graminifolium*  
(Ames) Pfitzer
- Dendrochilum hastatum* Ames
- Dendrochilum hutchinsonianum*  
Ames
- Dendrochilum irigense* Ames
- Dendrochilum javieri* L.K.Magrath,  
Bulmer & I.Shafer
- Dendrochilum kingii* (Hook.f.)  
J.J.Sm.
- Dendrochilum latifolium* Lindl.
- Dendrochilum latifolium* Lindl. var.  
*macranthum* (Schltr.)  
H.A.Pedersen
- Dendrochilum loheri* Ames
- Dendrochilum longibulbum* Ames
- Dendrochilum longifolium* Rchb.f.
- Dendrochilum longilabre* (Ames)  
Pfitzer

<i>Dendrochilum louisianum</i> H.A.Pedersen	<i>Dendrochilum philippinense</i> (Ames) Pfitzer var. <i>purpureum</i> (Ames) H.A.Pedersen
<i>Dendrochilum luzonense</i> Ames	<i>Dendrochilum plocoglottoides</i> H.A.Pedersen
<i>Dendrochilum magnum</i> Rchb.f.	<i>Dendrochilum prodigiosum</i> Ames
<i>Dendrochilum maleolens</i> Kraenzl	<i>Dendrochilum propinquum</i> Ames
<i>Dendrochilum malindangense</i> Ames	<i>Dendrochilum pulcherrimum</i> (Ames) L.O.Williams
<i>Dendrochilum marginatum</i> (Ames) L.O.Williams	<i>Dendrochilum pulogense</i> Ames
<i>Dendrochilum mcgregorii</i> Ames	<i>Dendrochilum pumilum</i> Rchb.f.
<i>Dendrochilum mearnsii</i> Ames	<i>Dendrochilum pumilum</i> Rchb.f. var. <i>recurvum</i> (Ames) H.A.Pedersen
<i>Dendrochilum merrillii</i> (Ames) Pfitzer	<i>Dendrochilum quadrilobum</i> Ames
<i>Dendrochilum microchilum</i> (Schltr.) Ames	<i>Dendrochilum quisumbingianum</i> H.A.Pedersen
<i>Dendrochilum mindanaense</i> (Ames) L.O.Williams	<i>Dendrochilum reniforme</i> Ames
<i>Dendrochilum mindorense</i> Ames	<i>Dendrochilum rhombophorum</i> (Rchb.f.) Ames
<i>Dendrochilum niveum</i> Ames	<i>Dendrochilum rotundilabium</i> L.O.Williams
<i>Dendrochilum ocellatum</i> (Ames) Pfitzer	<i>Dendrochilum saccolabium</i> Kraenzl
<i>Dendrochilum oliganthum</i> (Ames) Pfitzer	<i>Dendrochilum schweinfurthianum</i> (Ames) L.O.Williams
<i>Dendrochilum oreophilum</i> (Ames) L.O.Williams	<i>Dendrochilum simulacrum</i> Ames
<i>Dendrochilum pallideflavens</i> Blume	<i>Dendrochilum smithianum</i> (Ames) L.O.Williams
<i>Dendrochilum pangasinanense</i> Ames	<i>Dendrochilum stenophyllum</i> L.O.Williams
<i>Dendrochilum parvipapillatum</i> H.A.Pedersen	<i>Dendrochilum tenellum</i> (Nees & Meyen) Ames
<i>Dendrochilum parvulum</i> (Ames) Pfitzer	<i>Dendrochilum tenuibulbum</i> (Ames) L.O.Williams
<i>Dendrochilum parvulum</i> (Ames) Pfitzer var. <i>strictiforme</i> (Ames) H.A.Pedersen	<i>Dendrochilum tenuifolium</i> (Ames) Pfitzer in Engl.
<i>Dendrochilum perplexum</i> (Ames) L.O.Williams	<i>Dendrochilum tetradactyliferum</i> H.A.Pedersen
<i>Dendrochilum perplexum</i> (Ames) L.O.Williams var. <i>montanum</i> (Ames) H.A.Pedersen	<i>Dendrochilum turpe</i> (Ames) Pfitzer
<i>Dendrochilum philippinense</i> (Ames) Pfitzer	<i>Dendrochilum uncatum</i> Rchb.f.
	<i>Dendrochilum uncatum</i> Rchb.f. var. <i>longispicatum</i> (Ames) H.A.Pedersen
	<i>Dendrochilum unicallosum</i> L.O.Williams

- Dendrochilum unicorne* (Ames)  
L.O.Williams
- Dendrochilum vanoverberghii*  
Ames
- Dendrochilum wenzelii* Ames
- Dendrochilum williamsii* (Ames)  
Pfitzer
- Dendrochilum woodianum* Ames
- Dendrochilum yuccaefolium*  
L.O.Williams
- Didymoplexis**
- Didymoplexis pallens* Griff.
- Didymoplexis philippinensis* Ames
- Diglyphosa**
- Diglyphosa latifolia* Blume
- Dilochia**
- Dilochia elmeri* Ames in Elmer
- Diplocaulobium**
- Diplocaulobium clemensiae* (Ames)  
A.D.Hawkes
- Dipodium**
- Dipodium paludosum* (Griff.)  
Rchb.f.
- Dipodium pictum* (Lindl.) Rchb.f.
- Disperis**
- Disperis neilgherrensis* Wight
- Epiblastus**
- Epiblastus merrillii* L.O.Williams
- Epigeneium**
- Epigeneium acuminatum* (Rolfe ex  
Ames) Summerh.
- Epigeneium stellasilvae* (Loher &  
Kraenzl) Summerh.
- Epigeneium treacherianum* (Rchb.f.  
ex Hook.f.) Summerh.
- Epipogium**
- Epipogium roseum* (D.Don) Lindl.
- Eria**
- Eria albolutea* Rolfe
- Eria aliciae* Quisumb.
- Eria anceps* Leav.
- Eria aporoides* Lindl.
- Eria barbifrons* Kraenzl
- Eria brachystachya* Rchb.f.
- Eria bractescens* Lindl.
- Eria candoonensis* Ames
- Eria carnicolor* Ames
- Eria citrina* Ridl.
- Eria clemensiae* Leav.
- Eria compacta* Ames
- Eria copelandii* Leav.
- Eria copelandii* Leav. var.  
*fusiformis* Leav.
- Eria curranii* Leav.
- Eria cylindrostachya* Ames
- Eria cymbiformis* J.J.Sm.
- Eria dagamensis* Ames
- Eria davaensis* Ames
- Eria fastigiatifolia* Ames
- Eria floribunda* Lindl.
- Eria gigantea* Ames
- Eria hutchinsoniana* Ames
- Eria jarensis* Ames
- Eria javanica* (Sw.) Blume
- Eria lamellata* Ames
- Eria leavittii* Kraenzl
- Eria longibracteata* Leav.
- Eria longicururis* Leav.
- Eria longilabris* Lindl.
- Eria longissima* Ames & Quisumb.
- Eria lyonii* Leav.
- Eria macera* Ames
- Eria major* Ridl.
- Eria maquilangensis* Ames
- Eria mearnsii* Leav.
- Eria merrittii* Ames
- Eria microchila* Ames
- Eria mindanaensis* Ames
- Eria ornata* (Blume) Lindl.
- Eria ovata* Lindl.
- Eria palawanensis* Ames
- Eria perspicabilis* Ames
- Eria philippinensis* Ames
- Eria polyura* Lindl.
- Eria profusa* Lindl.

*Eria propinqua* Ames  
*Eria puguahaanensis* Ames  
*Eria ramosa* Ames  
*Eria rhodoptera* Rchb.f.  
*Eria ringens* Rchb.f.  
*Eria senilis* Ames  
*Eria taylorii* Ames  
*Eria tridens* Ames  
*Eria vanoverberghii* Ames  
*Eria ventricosa* Leav.  
*Eria whitfordii* Leav.  
*Eria woodiana* Ames  
*Eria xanthocheila* Ridl.  
*Eria zamboangensis* Ames

**Erythrodes**

*Erythrodes boettcheri* Ames  
*Erythrodes weberi* Ames  
*Erythrodes wenzelii* Ames

**Erythrorchis**

*Erythrorchis altissima* (Blume)  
 Blume

**Eulophia**

*Eulophia andamanensis* Rchb.f.  
*Eulophia bicallosa* (D.Don)  
 P.F.Hunt & Summerh.  
*Eulophia dentata* Ames  
*Eulophia exaltata* Rchb.f.  
*Eulophia graminea* Lindl.  
*Eulophia pulchra* (Thouars) Lindl.  
*Eulophia spectabilis* (Dennst.)  
 Suresh  
*Eulophia zollingeri* (Rchb.f.)  
 J.J.Sm.

**Flickingeria**

*Flickingeria bancana* (J.J.Sm.)  
 A.D.Hawkes  
*Flickingeria candoonensis* (Ames)  
 Fessel & Lückel  
*Flickingeria chrysographata*  
 (Ames) A.D.Hawkes  
*Flickingeria comata* (Blume)  
 A.D.Hawkes  
*Flickingeria eurorum* (Ames)  
 A.D.Hawkes

*Flickingeria fimbriata* (Blume)  
 A.D.Hawkes  
*Flickingeria junctiloba* Fessel &  
 Lückel  
*Flickingeria luxurians* (J.J.Sm.)  
 A.D.Hawkes  
*Flickingeria pseudoconvexa*  
 (Ames) A.D.Hawkes  
*Flickingeria purpureostelidia*  
 (Ames) A.D.Hawkes  
*Flickingeria unicornis* (Ames)  
 A.D.Hawkes  
*Flickingeria xantholeuca* (Rchb.f.)  
 A.D.Hawkes

**Galeola**

*Galeola nudifolia* Lour.

**Gastrochilus**

*Gastrochilus calceolaris* (Buch.-  
 Ham. ex Sm.) D.Don  
*Gastrochilus sororius* Schltr.

**Gastrodia**

*Gastrodia javanica* (Blume) Lindl.

**Geodorum**

*Geodorum densiflorum* (Lam.)  
 Schltr.

**Glomera**

*Glomera merrillii* Ames

**Goodyera**

*Goodyera clausa* (Eaton ex Ames)  
 Schltr.  
*Goodyera dawsonii* Boxall ex  
 Náves  
*Goodyera elmeri* (Ames) Ames  
*Goodyera fumata* Thwaites  
*Goodyera luzonensis* Ames  
*Goodyera picta* Boxall ex Náves  
*Goodyera procera* (Ker Gawl.)  
 Hook.  
*Goodyera ramosii* Ames  
*Goodyera rubicunda* (Blume)  
 Lindl.  
*Goodyera viridiflora* (Blume)  
 Blume

**Grammatophyllum**



*Grammatophyllum elegans* Rchb.f.  
*Grammatophyllum martae*  
Quisumb. ex Valmayor & D.Tiu  
*Grammatophyllum measuresianum*  
Sander  
*Grammatophyllum multiflorum*  
Lindl.  
*Grammatophyllum scriptum* (L.)  
Blume  
*Grammatophyllum speciosum*  
Blume  
*Grammatophyllum stapeliiflorum*  
(Teijsm. & Binn.) J.J.Sm.  
*Grammatophyllum wallisii* Rchb.f.

**Grosourdya**

*Grosourdya appendiculata* (Blume)  
Rchb.f.  
*Grosourdya tripercus* (Ames)  
Garay

**Habenaria**

*Habenaria alagensis* Ames  
*Habenaria aristulifera* Rchb.f.  
*Habenaria boadanensis* Ames  
*Habenaria congesta* Ames  
*Habenaria curranii* Ames  
*Habenaria dentata* (Sw.) Schltr.  
*Habenaria diphylla* (Nimmo) Dalz.  
*Habenaria falcigera* Rchb.f.  
*Habenaria intrudens* Ames  
*Habenaria leibergii* Ames  
*Habenaria lingulosa* Ames  
*Habenaria malintana* (Blanco)  
Merr.  
*Habenaria mearnsii* Ames  
*Habenaria muricata* (Schauer)  
Rchb.f.  
*Habenaria ponerostachys* Rchb.f.  
*Habenaria reticulata* Ames  
*Habenaria rhodocheila* Hance  
subsp. *philippinensis* (Ames)  
Christenson  
*Habenaria robinsonii* Ames  
*Habenaria rosulata* Ames  
*Habenaria rumphii* (Brongn.)  
Lindl.

*Habenaria stenopetala* Lindl.  
*Habenaria vanoverberghii* Ames  
*Habenaria warburgiana* Kraenzl  
*Habenaria zephyrica* Ames

**Herminium**

*Herminium lanceum* (Thunb. ex  
Sw.) Vuijk

**Hetaeria**

*Hetaeria anomala* (Lindl.) Hook.f.  
*Hetaeria mindanaensis* Ames  
*Hetaeria oblongifolia* Blume  
*Hetaeria wenzelii* Ames

**Hippeophyllum**

*Hippeophyllum wenzelii* Ames

**Hylophila**

*Hylophila lanceolata* (Blume) Miq.  
*Hylophila rubra* Ames

**Hymenorchis**

*Hymenorchis vanoverberghii*  
(Ames) Garay

**Kuhlhasseltia**

*Kuhlhasseltia whiteheadii* (Rendle)  
Ames  
*Kuhlhasseltia yakushimensis*  
(Yamam.) Ormerod

**Lecanorchis**

*Lecanorchis javanica* Blume

**Lepidogyne**

*Lepidogyne longifolia* (Blume)  
Blume

**Liparis**

*Liparis amesiana* Schltr.  
*Liparis benguetensis* (Ames) Schltr.  
*Liparis bontocensis* Ames  
*Liparis bootanensis* Griff.  
*Liparis cauliflora* Merr.  
*Liparis clemensiae* (Ames) Ames  
*Liparis compressa* (Blume) Lindl.  
*Liparis condylobulbon* Rchb.f.  
*Liparis cumingii* Ridl.  
*Liparis distans* C.B.Clarke  
*Liparis dumaguettensis* Ames  
*Liparis elegans* Lindl.  
*Liparis elliptica* Wight

- Liparis elmeri* (Ames) Schltr.  
*Liparis fragilis* (Ames) Ames  
*Liparis fulgens* Rolfe  
*Liparis halconensis* (Ames) Ames  
*Liparis jarensis* Ames  
*Liparis leytenis* Ames  
*Liparis linearifolia* (Ames) Ames  
*Liparis magnicallosa* Ames  
*Liparis merrillii* (Ames) Schltr.  
*Liparis monophylla* Ames  
*Liparis negrosiana* Ames  
*Liparis nutans* (Ames) Ames  
*Liparis palawanensis* Ames  
*Liparis pallida* (Blume) Lindl.  
*Liparis parviflora* (Blume) Lindl.  
*Liparis pectinata* Ridl.  
*Liparis philippinensis* (Ames) Schltr.  
*Liparis poilanei* Gagnep.  
*Liparis prava* Ames  
*Liparis propinqua* Ames  
*Liparis rizalensis* Ames  
*Liparis robusta* Hook.f.  
*Liparis tricallosa* Rchb.f.  
*Liparis trichoglottis* (Ames) Schltr.  
*Liparis viridiflora* (Blume) Lindl.  
*Liparis wenzelii* Ames
- Ludisia**  
*Ludisia discolor* (Ker Gawl.) Blume
- Luisia**  
*Luisia cordatilabia* Ames & Quisumb.  
*Luisia curtisii* Seidenf.  
*Luisia foxworthii* Ames  
*Luisia ramosii* Ames  
*Luisia teretifolia* Gaudich.  
*Luisia valida* Rchb.f.
- Macodes**  
*Macodes petola* (Blume) Lindl.  
*Macodes setaceus* Boxall ex Náves  
*Macodes striatus* Boxall ex Náves  
*Macodes veitchii* Boxall ex Náves
- Macodes xanthophyllus* Boxall ex Náves
- Macropodanthus**  
*Macropodanthus philippinensis* L.O. Williams
- Malaxis**  
*Malaxis acuminata* D. Don  
*Malaxis alagensis* (Ames) Ames  
*Malaxis arietina* Ames  
*Malaxis atosanguinea* Ames  
*Malaxis balabacensis* Ames  
*Malaxis bancanoides* Ames  
*Malaxis bataanensis* Ames  
*Malaxis benguetensis* Ames  
*Malaxis binabayensis* (Ames) Ames  
*Malaxis bracteosa* Ames  
*Malaxis bulusanensis* Ames  
*Malaxis copelandii* Ames  
*Malaxis cuneipetala* Ames  
*Malaxis davaensis* Ames  
*Malaxis dentata* (Ames) Ames  
*Malaxis elmeri* Ames  
*Malaxis epiphytica* Ames  
*Malaxis hutchinsoniana* (Ames) Ames  
*Malaxis lilacina* Ames  
*Malaxis merrillii* (Ames) Ames  
*Malaxis mindorensis* (Rendle) Ames  
*Malaxis monophyllos* (L.) Sw.  
*Malaxis negrosiana* Ames  
*Malaxis ophrydis* (J. Koenig) Ormerod  
*Malaxis propinqua* Ames  
*Malaxis purpureiflora* Ames & Quisumb.  
*Malaxis quadridentata* (Ames) Ames  
*Malaxis quadriloba* Ames  
*Malaxis ramosii* Ames  
*Malaxis rizalensis* Ames  
*Malaxis taylorii* Ames  
*Malaxis uncata* Ames  
*Malaxis wenzelii* Ames

- Malaxis williamsii* Ames
- Malleola**  
*Malleola constricta* Ames  
*Malleola lyonii* Ames
- Megalotus**  
*Megalotus bifidus* (Lindl.) Garay
- Micropera**  
*Micropera loheri* (L.O. Williams) Garay  
*Micropera pallida* (Roxb.) Lindl.  
*Micropera philippinensis* (Lindl.) Garay  
*Micropera utriculosa* (Ames) Garay
- Microsaccus**  
*Microsaccus griffithii* (Parish & Rchb.f.) Seidenf.  
*Microsaccus wenzelii* Ames
- Microstylis**  
*Microstylis odorata* Boxall ex Náves
- Microtatorchis**  
*Microtatorchis aristata* Garay  
*Microtatorchis compacta* (Ames) Schltr.
- Microtis**  
*Microtis unifolia* (G.Forst.) Rchb.f.
- Myrmechis**  
*Myrmechis gracilis* (Blume) Blume  
*Myrmechis perpusilla* Ames  
*Myrmechis philippinensis* Ames
- Nephelaphyllum**  
*Nephelaphyllum mindorense* Ames  
*Nephelaphyllum pulchrum* Blume
- Nervilia**  
*Nervilia aragoana* Gaudich.  
*Nervilia crocififormis* (Zoll. & Moritzi) Seidenf.  
*Nervilia dilatata* (Blume) Schltr.  
*Nervilia plicata* (Andrews) Schltr.
- Neuwiedia**  
*Neuwiedia veratrifolia* Blume
- Oberonia**  
*Oberonia aporophylla* Rchb.f.  
*Oberonia basilanensis* Ames
- Oberonia benguetensis* Ames  
*Oberonia cylindrica* Lindl.  
*Oberonia elmeri* Ames  
*Oberonia hispidula* Ames  
*Oberonia iridifolia* (Roxb.) Lindl.  
*Oberonia leytensis* Ames  
*Oberonia lipensis* Ames  
*Oberonia luzonensis* Ames  
*Oberonia lycopodioides* (J.Koenig) Ormerod  
*Oberonia mcgregorii* Ames  
*Oberonia merrillii* Ames  
*Oberonia mindorensis* Ames  
*Oberonia minima* Ames  
*Oberonia minutissima* Ames  
*Oberonia monstrosa* (Blume) Lindl.  
*Oberonia obesa* Ames  
*Oberonia reilloi* Ames  
*Oberonia setigera* Ames  
*Oberonia surigaensis* Ames  
*Oberonia thisbe* Rchb.f.  
*Oberonia toppingii* Ames  
*Oberonia wenzelii* Ames
- Octarrhena**  
*Octarrhena amesiana* Schltr.  
*Octarrhena ensifolia* (Ames) Schltr.  
*Octarrhena gemmifera* Ames  
*Octarrhena parvula* Thwaites
- Omoea**  
*Omoea philippinensis* Ames
- Orchipedum**  
*Orchipedum wenzelii* (Ames) J.J.Sm.
- Pachystoma**  
*Pachystoma pubescens* Blume
- Paphiopedilum**  
*Paphiopedilum acmodontum* Schoser ex M.W.Wood  
*Paphiopedilum adductum* Asher  
*Paphiopedilum adductum* Asher var. *anitum* (Golamco) Koop.  
*Paphiopedilum argus* (Rchb.f.) Stein

*Paphiopedilum ciliolare* (Rchb.f.)

Stein

*Paphiopedilum fowliei* Birk

*Paphiopedilum haynaldianum*

(Rchb.f.) Stein

*Paphiopedilum haynaldianum*

(Rchb.f.) Stein var. *laurae*

Golamco

*Paphiopedilum hennisianum*

(M.W.Wood) Fowlie

*Paphiopedilum parnatanum*

Cavestro

*Paphiopedilum philippinense*

(Rchb.f.) Stein

*Paphiopedilum philippinense*

(Rchb.f.) Stein var. *roebelenii*

(Veitch) P.J.Cribb

*Paphiopedilum randsii* Fowlie

*Paphiopedilum urbanianum* Fowlie

*Paphiopedilum x expansum*

J.T.Atwood

#### **Pennilabium**

*Pennilabium confusum* (Ames)

Garay

*Pennilabium luzonense* (Ames)

Garay

#### **Peristylus**

*Peristylus copelandii* (Ames) Carr

*Peristylus goodyeroides* (D.Don)

Lindl.

*Peristylus lacertifer* (Lindl.) J.J.Sm.

*Peristylus maingayi* (King & Pantl.)

J.J.Wood & Ormerod

*Peristylus monticola* (Ridl.)

Seidenf.

*Peristylus warburgianus* Kraenzl

#### **Phaius**

*Phaius amboinensis* Blume

*Phaius borneensis* J.J.Sm.

*Phaius flavus* (Blume) Lindl.

*Phaius fragilis* L.O.Williams

*Phaius linearifolius* Ames

*Phaius lyonii* Ames

*Phaius mishmensis* (Lindl. &

Paxton) Rchb.f.

*Phaius philippinensis* N.E.Br.

*Phaius tankervilleae* (Banks ex  
L'Hér.) Blume

#### **Phalaenopsis**

*Phalaenopsis amabilis* (L.) Blume

*Phalaenopsis aphrodite* Rchb.f.

*Phalaenopsis bastianii* O.Gruss &

Roellke

*Phalaenopsis cornucervi* (Breda)

Blume & Rchb.f.

*Phalaenopsis deliciosa* Rchb.f.

*Phalaenopsis equestris* (Schauer)

Rchb.f.

*Phalaenopsis fasciata* Rchb.f.

*Phalaenopsis fuscata* Rchb.f.

*Phalaenopsis hieroglyphica*

(Rchb.f.) H.R.Sweet

*Phalaenopsis lindenii* Loher

*Phalaenopsis lueddemanniana*

Rchb.f.

*Phalaenopsis mariae* Burb. Ex

R. Warner & B.S.Williams

*Phalaenopsis micholitzii* Rolfe

*Phalaenopsis pallens* (Lindl.)

Rchb.f.

*Phalaenopsis pallens* (Lindl.)

Rchb.f. var. *trullifera* H.R.Sweet,

*Phalaenopsis philippinensis*

Golamco ex Fowlie & C.Z.Tang

*Phalaenopsis pulchra* (Rchb.f.)

H.R.Sweet

*Phalaenopsis reichenbachiana*

Rchb.f. & Sander

*Phalaenopsis sanderiana* Rchb.f.

*Phalaenopsis sanderiana* Rchb.f.

*Phalaenopsis marmorata* Rchb.f.

*Phalaenopsis schilleriana* Rchb.f.

*Phalaenopsis stuartiana* Rchb.f.

*Phalaenopsis stuartiana* Rchb.f. f.

*punctatissima* (Rchb.f.)

Christenson

*Phalaenopsis sumatrana* Korth. &

Rchb.f.

*Phalaenopsis x amphitrite* Kraenzl

*Phalaenopsis x intermedia* Lindl.

*Phalaenopsis x leucorrhoda*  
Rchb.f.

*Phalaenopsis x veitchiana* Rchb.f.

**Pholidota**

*Pholidota articulata* Lindl.

*Pholidota carnea* (Blume) Lindl.

*Pholidota imbricata* Hook.

*Pholidota ventricosa* (Blume)  
Rchb.f.

**Phragmorchis**

*Phragmorchis teretifolia*  
L.O.Williams

**Phreatia**

*Phreatia amesii* Kraenzl

*Phreatia aristulifera* Ames

*Phreatia caulescens* Ames

*Phreatia densiflora* (Blume) Lindl.

*Phreatia elmeri* Ames

*Phreatia infundibuliformis* Ames

*Phreatia luzonensis* Rolfe ex Ames

*Phreatia mearnsii* Ames

*Phreatia negrosiana* Ames

*Phreatia plantaginifolia* (J.Koenig)

Ormerod

*Phreatia prorepens* Rchb.f.

*Phreatia ramosii* Ames

*Phreatia sulcata* (Blume) J.J.Sm.

*Phreatia vanoverberghii* Ames

*Phreatia wenzelii* Ames

*Phreatia xantholeuca* Kraenzl

**Pilophyllum**

*Pilophyllum villosum* (Blume)  
Schltr.

**Platanthera**

*Platanthera angustata* (Blume)  
Lindl.

**Plocoglottis**

*Plocoglottis bicallosa* Ames

*Plocoglottis bicomata* L.O.Williams

*Plocoglottis copelandii* Ames

*Plocoglottis loheriana* (Kraenzl)  
Goebel

*Plocoglottis lucbanensis* Ames

*Plocoglottis mindorensis* Ames

*Plocoglottis plicata* (Roxb.)  
Ormerod

**Poaephyllum**

*Poaephyllum grandiflorum*  
Quisumb.

*Poaephyllum pauciflorum* (Hook.f.)  
Ridl.

**Podochilus**

*Podochilus bicaudatus* Schltr.

*Podochilus cumingii* Schltr.

*Podochilus hystricinus* Ames

*Podochilus intricatus* Ames

*Podochilus longilabris* Ames

*Podochilus lucescens* Blume

*Podochilus plumosus* Ames

*Podochilus ramosii* Ames

*Podochilus sciuroides* Rchb.f.

*Podochilus serpyllifolius* (Blume)  
Lindl.

*Podochilus strictus* Ames

**Polystachya**

*Polystachya concreta* (Jacq.) Garay  
&H.R.Sweet

**Pomatocalpa**

*Pomatocalpa bicolor* (Lindl.)  
J.J.Sm.

*Pomatocalpa fuscum* J.J.Sm.

*Pomatocalpa kunstleri* (Hook.f.)  
J.J.Sm.

*Pomatocalpa spicatum* Breda

**Pristiglottis**

*Pristiglottis mindanaensis* (Ames)  
Cretz. & J.J.Sm.

*Pristiglottis philippinensis* (Ames)  
Cretz. & J.J.Sm.

**Pseudovanilla**

*Pseudovanilla philippinensis*  
(Ames) Garay

**Pteroceras**

*Pteroceras cladostachyum*  
(Hook.f.) H.A.Pedersen

*Pteroceras leopardinum* (Parish &  
Rchb.f.) Seidenf. & Smitinand

*Pteroceras longicalcareum* (Ames  
& Rolfe) Garay  
*Pteroceras pallidum* (Blume)  
Holtum  
*Pteroceras philippinense* (Ames)  
Garay  
*Pteroceras teres* (Blume)  
Holtum  
*Pteroceras unguiculatum* (Lindl.)  
H.A.Pedersen

**Renanthera**

*Renanthera amabilis* Boxall ex  
Náves  
*Renanthera angustifolia* Hook.f.  
*Renanthera brevifolia* (Rchb.f.)  
R. Rice & J.J. Wood  
*Renanthera elongata* (Blume)  
Lindl.  
*Renanthera monachica* Ames  
*Renanthera philippinensis* (Ames  
& Quisumb.) L.O.Williams  
*Renanthera storiei* Rchb.f.

**Rhomboda**

*Rhomboda blackii* (Ames)  
Ormerod  
*Rhomboda cristata* (Blume)  
Ormerod  
*Rhomboda lanceolata* (Lindl.)  
Ormerod  
*Rhomboda weberi* (Ames)  
Ormerod

**Rhynchostylis**

*Rhynchostylis gigantea* (Lindl.)  
Ridl.  
*Rhynchostylis retusa* (L.) Blume

**Robiquetia**

*Robiquetia cerina* (Rchb.f.)  
Garay  
*Robiquetia compressa* (Lindl.)  
Schltr.  
*Robiquetia discolor* (Rchb.f.)  
Seidenf. & Garay

*Robiquetia pantherina* (Kraenzl)  
Ames  
*Robiquetia spatulata* (Blume)  
J.J.Sm.  
*Robiquetia vanoverberghii* Ames

**Saccolabiopsis**

*Saccolabiopsis tenella* (Ames)  
Garay

**Saccolabium**

*Saccolabium semiclausum*  
Kraenzl

**Sarcophyton**

*Sarcophyton crassifolium* (Lindl.  
& Paxton) Garay  
*Sarcophyton pachyphyllum*  
(Ames) Garay

**Schoenorchis**

*Schoenorchis micrantha* Reinw.  
ex Blume  
*Schoenorchis paniculata* Blume

**Schuitemanina**

*Schuitemanina merrillii* (Ames)  
Ormerod

**Spathoglottis**

*Spathoglottis chrysantha* Ames  
*Spathoglottis elmeri* Ames  
*Spathoglottis kimballiana* Hort.  
var. *angustifolia* Ames  
*Spathoglottis kimballiana* Hort.  
var. *antiquensis* T.Green  
*Spathoglottis palawanensis*  
Lubag-Arquiza  
*Spathoglottis philippinensis*  
Lubag- Arquiza  
*Spathoglottis plicata* Blume  
*Spathoglottis tomentosa* Lindl.  
*Spathoglottis vanoverberghii*  
Ames  
*Spathoglottis x parsonsii* (Ames  
& Quisumb.) Ames & Quisumb.

**Spiranthes**

*Spiranthes sinensis* (Pers.) Ames

**Stereosandra**

*Stereosandra javanica* Blume

**Taeniophyllum**

*Taeniophyllum copelandii* Ames

*Taeniophyllum elmeri* Ames

*Taeniophyllum leytense* Ames

*Taeniophyllum merrillii* Ames

*Taeniophyllum philippinense*

Rchb.f.

*Taeniophyllum saccatum*

L.O. Williams

**Tainia**

*Tainia elmeri* Ames

**Thecostele**

*Thecostele alata* (Roxb.) Parish &

Rchb.f.

**Thelasis**

*Thelasis capitata* Blume

*Thelasis carinata* Blume

*Thelasis micrantha* (Brongn.)

J.J.Sm.

*Thelasis obtusa* Blume

*Thelasis pygmaea* (Griff.) Blume

**Thelymitra**

*Thelymitra javanica* Blume

**Thrixspermum**

*Thrixspermum acuminatissimum*

(Blume) Rchb.f.

*Thrixspermum agusanense* Ames

*Thrixspermum amesianum*

L.O. Williams

*Thrixspermum amplexicaule*

(Blume) Rchb.f.

*Thrixspermum angustatum*

L.O. Williams

*Thrixspermum centipede* Lour.

*Thrixspermum croceum* (Lindl.)

Rchb.f.

*Thrixspermum elmeri*

L.O. Williams

*Thrixspermum elongatum* Ames

*Thrixspermum eximium*

L.O. Williams

*Thrixspermum fantasticum*

L.O. Williams

*Thrixspermum hystrix* (Blume)

Rchb.f.

*Thrixspermum integrum*

L.O. Williams

*Thrixspermum ligulatum*

L.O. Williams

*Thrixspermum linearifolium* Ames

*Thrixspermum merguense*

(Hook.f.) Kuntze

*Thrixspermum pensile* Schltr.

*Thrixspermum quinquelobum*

Ames

*Thrixspermum robinsonii* Ames

*Thrixspermum rostratum* Ames

*Thrixspermum subulatum* (Blume)

Rchb.f.

*Thrixspermum vanoverberghii*

Ames

*Thrixspermum weberi* Ames

*Thrixspermum wenzelii* Ames

**Trichoglottis**

*Trichoglottis agusanensis* Ames &  
Quisumb.

*Trichoglottis amesiana*

L.O. Williams

*Trichoglottis apoensis* T.Hashim.

*Trichoglottis atropurpurea* Rchb.f.

*Trichoglottis bataanensis* Ames

*Trichoglottis bicruris* Kraenzl

*Trichoglottis brachystachya*

(Kraenzl) Garay

*Trichoglottis calochila*

L.O. Williams

*Trichoglottis fasciata* Rchb.f.

*Trichoglottis geminata* (Teijsm. &

Binn.) J.J.Sm.

*Trichoglottis guibertii* (Linden &

Rchb.f.) Rchb.f.

*Trichoglottis intermedia*

L.O. Williams

*Trichoglottis ionosma* (Lindl.)

J.J.Sm.

*Trichoglottis latisepala* Ames

*Trichoglottis latisepala* Ames var.  
*tricarinata* T.Hashim.

*Trichoglottis loheriana* (Kraenzl)

L.O.Williams

*Trichoglottis luchuensis* (Rolfe)

Garay & H.R.Sweet

*Trichoglottis luzonensis* Ames

*Trichoglottis mindanaensis* Ames

*Trichoglottis philippinensis* Lindl.

*Trichoglottis rosea* (Lindl.) Ames

*Trichoglottis solerederi* Kraenzl

*Trichoglottis subviolacea* (Llanos)

Merr.

*Trichoglottis tamesisii* Quisumb. &

C.Schweinf.

#### **Trichotosia**

*Trichotosia binabayensis* (Ames)

Kraenzl

*Trichotosia fusca* (Blume) Teijsm.

& Binn.

*Trichotosia halconensis* (Ames)

Kraenzl

*Trichotosia hirsutipetala* (Ames)

Schuit. & de Vogel

*Trichotosia lagunensis* (Ames)

Schuit. & de Vogel

*Trichotosia leytensis* (Ames)

Schuit. & de Vogel

*Trichotosia mcgregorii* (Ames)

Schuit. & de Vogel

*Trichotosia odorifera* (Leav.)

Kraenzl

*Trichotosia ramosii* (Leav.) Kraenzl

*Trichotosia vulpina* (Rchb.f.)

Kraenzl

#### **Tropidia**

*Tropidia angulosa* (Lindl.) Blume

*Tropidia mindanaensis* Ames

*Tropidia mindorensis* Ames

*Tropidia robinsonii* Ames

*Tropidia septemnervis* (Schauer)

Rchb.f.

#### **Tuberolabium**

*Tuberolabium brevirhachis*

(L.O.Williams) J.J.Wood

*Tuberolabium escritorii* (Ames)

Garay

*Tuberolabium kotoense* Yamam.

*Tuberolabium quisumbingii*

(L.O.Williams) Christenson

*Tuberolabium rhopalorrhachis*

(Rchb.f.) J.J.Wood

*Tuberolabium sarcochiloides*

(Schltr.) Garay

#### **Vanda**

*Vanda javierae* D.Tiu ex Fessel &

Lückel

*Vanda lamellata* Lindl.

*Vanda cumingii* Baxter in Loud.

*Vanda lamellata* Lindl. var. *boxallii*

Rchb.f.

*Vanda lamellata* Lindl. var.

*remediosiae* Ames & Quisumb.

*Vanda limbata* Blume

*Vanda luzonica* Loher ex Rolfe

*Vanda merrillii* Ames & Quisumb.

*Vanda roeblingiana* Rolfe

*Vanda sanderiana* Rchb.f.

*Vanda sanderiana* var. *immaculata*

Golamco

*Vanda scandens* Holttum

*Vanda ustii* Golamco, Claustro &

de Mesa

#### **Vandopsis**

*Vandopsis lissochiloides* (Gaudich.)

Pfitzer in Engl. & Prantl

#### **Vanilla**

*Vanilla calopogon* Rchb.f.

*Vanilla ovalis* Blanco

*Vanilla speciosa* Boxall ex Náves

#### **Vrydagzynea**

*Vrydagzynea albida* (Blume) Blume

*Vrydagzynea vrydagzynoides*

(Ames) Ormerod

*Vrydagzynea weberi* Ames



**Zeuxine**

*Zeuxine affinis* (Lindl.) Benth. ex  
Hook.f.

*Zeuxine elmeri* (Ames) Ames

*Zeuxine flava* (Wall. Ex Lindl.)  
Benth. ex Hook.f.

*Zeuxine lancifolia* (Ames) Ormerod

*Zeuxine leytensis* (Ames) Ames

*Zeuxine marivelensis* (Ames)  
Schltr.

*Zeuxine nervosa* (Wall. Ex Lindl.)  
Trimen

*Zeuxine parvifolia* (Ridl.) Ridl. ex  
K.Schum. & Fedde

*Zeuxine philippinensis* (Ames)  
Ames

*Zeuxine strateumatica* (L.) Schltr.